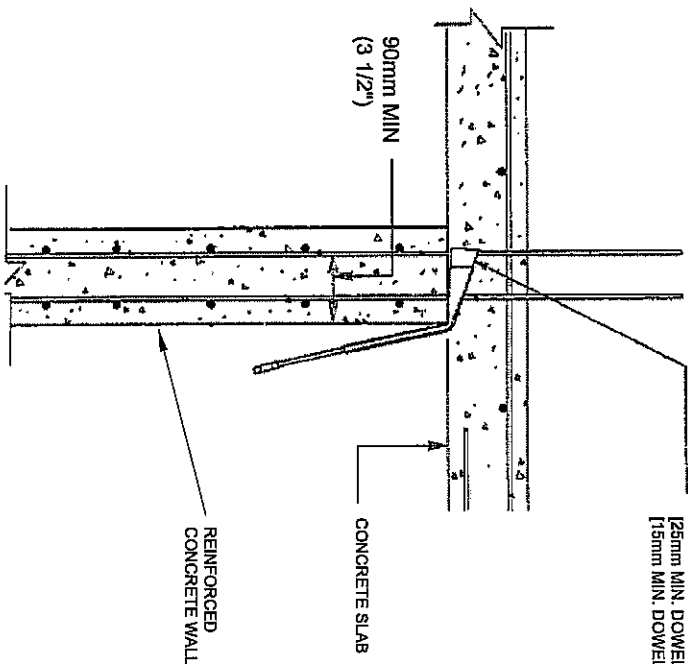
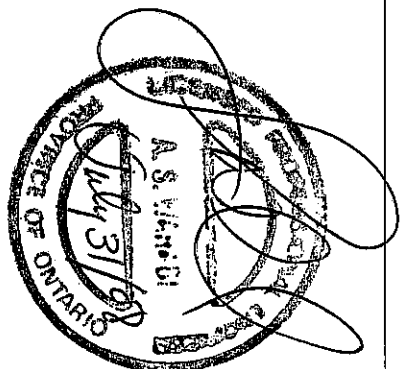


CAUTION: REVIEW ALL MANUFACTURER'S INSTRUCTIONS AND INSTRUCTIONS ON THIS DRAWING BEFORE INSTALLATION AND USE.



ATTACH SAFE-T-STRAP (HR-01) TO PROTRUDING RE-BAR DOWEL BEFORE POURING FLOOR SLAB.
 [25mm MIN. DOWEL IF USED BEFORE POURING FLOOR SLAB]
 [15mm MIN. DOWEL IF USED AFTER POURING FLOOR SLAB]



INSTALLATION & SAFE USE NOTES:

- 1-INSPECT THE UNWRAPPED SAFE-T-STRAP FOR ANY SIGNS OF DEFECTS. DO NOT USE IF ANY DEFECTS ARE FOUND. QUARANTINE AND DISPOSE OF DEFECTIVE UNITS.
- 2-ASSEMBLE THE SAFE-T-STRAP BY INSERTING THE REAR PROTRUDING REBAR DOWEL THROUGH THE SAFE-T-STRAP END LOOP (SEE DRAWING), WITH MIN. VERTICAL REBAR EMBEDMENT LENGTH OF 500mm (20").
- 3-ENSURE THE GREEN PROTECTIVE SLEEVE IS IN PLACE PROPERLY AND COVERS THE WEBBING WHERE IT CONTACTS THE EDGE OF WALL OR SLAB.
- 4-INSPECT THE SAFE-T-STRAP INSTALLATION TO ENSURE ALL COMPONENTS ARE CORRECTLY SECURED IN PLACE PRIOR TO PLACING CONCRETE.
- 5-ENSURE THE CONCRETE WALL HAS ATTAINED AT LEAST 7 DAYS STRENGTH FOR MIN. 20 MPa (3000 psi) BEFORE THE SAFE-T-STRAP IS USED.
- 6-FORMWORK ENGINEER MUST BE CONSULTED FOR SPECIAL ANCHORAGE REQUIREMENTS AND APPROVAL. IF SAFE-T-STRAP IS INTENDED TO BE USED PRIOR TO POURING CONCRETE SLAB.
- 7-INSPECT THE SAFE-T-STRAP BEFORE EACH USE TO ENSURE ALL COMPONENTS ARE SECURED IN PLACE, AND
- 8-KEEP A WRITTEN LOG OF ALL INSPECTIONS.

INSPECTION RECOMMENDATIONS:

- 1-FOLLOW ALL MANUFACTURER'S INSPECTION GUIDELINES BEFORE EACH USE.
- 2-INSPECT THE SAFE-T-STRAP BEFORE EACH USE FOR ANY SIGNS OF TAMPERING, SERIOUS CORROSION OR DISTRESS.
- 3-INSPECT THE ENTIRE LENGTH OF NYLON WEBBING FOR ANY SIGNS OF EXCESSIVE WEAR, FRAVING, CUTS, OR DISTRESS.
- 4-REMOVE THE SAFE-T-STRAP FROM SERVICE UPON DISCOVERY OF ANY DEFECT IN THE SYSTEM AND NOT USE UNTIL EXAMINED AND APPROVED FOR USE BY A PROFESSIONAL ENGINEER, AND
- 5-KEEP A WRITTEN LOG OF ALL INSPECTIONS.

GENERAL NOTES:

- 1-THE SAFE-T-STRAP IS DESIGNED WITH AN ULTIMATE STRENGTH OF 8000 LBS IN ACCORDANCE WITH THE REQUIREMENTS OF OSHA/OSHA REGULATIONS & APPLICABLE CSA AND ANSI STANDARDS.
- 2-THE SYSTEM MUST BE USED IN ACCORDANCE WITH THE REQUIREMENTS OF OSHA/OSHA.
- 3-A COMPETENT WORKER MUST INSTALL AND INSPECT THE SYSTEM AND ALL OTHER FALL PROTECTION EQUIPMENT TO ENSURE THAT ALL ARE IN A SAFE OPERATIONAL CONDITION. THE WORKER MUST REPORT ANY SIGNS OF DISTRESS AND THE SYSTEM NOT USED UNTIL IT HAS BEEN REPAIRED AND APPROVED FOR USE BY A PROFESSIONAL ENGINEER.
- 4-WHEN APPROACHING WITHIN 2M (6.5') OF AN UNPROTECTED EDGE, A WORKER SHALL BE WEARING A FULL BODY HARNESS EQUIPPED WITH A SHOCK ABSORBING LANYARD AND TIED TO AN ANCHOR OR A LIFELINE SECURED TO A SAFETY ANCHOR OUTSIDE THE 2M (6.5') LIMIT.
- 5-THE FULL BODY HARNESSES AND LANYARDS MUST COMPLY WITH THE REQUIREMENTS OF OSHA/OSHA.
- 6-DEVELOP AN EMERGENCY RESCUE PLAN.
- 7-HITE ENGINEERING CORPORATION MUST BE NOTIFIED OF ANY CHANGES TO OR DEVIATION FROM THIS DRAWING.

OCCUPATIONAL CLASSIFICATIONS

ALLOWED TO USE THIS SYSTEM: ALL OCCUPATIONAL CLASSIFICATIONS WHERE FALL PROTECTION IS REQUIRED. THE SAFE-T-STRAP MUST NOT BE USED IN ENVIRONMENTS WHERE THE SYSTEM COULD COME IN CONTACT WITH CORROSIVE MATERIALS.

CONSTRUCTION	FINAL
--------------	-------

REV#	DESCRIPTION	DATE	BY
01	FINAL	07/28/08	S.W./A.B.
02	REVISIONS	08/11/09	C.H./A.P.

THE INFORMATION CONTAINED HEREIN IS PROPRIETARY TO HITE ENGINEERING AND MAY NOT BE USED, REPRODUCED OR TRANSMITTED IN ANY FORM OR BY ANY MEANS, WITHOUT THE WRITTEN PERMISSION OF HITE ENGINEERING. THE INFORMATION AND USE, ADMITS TO PROTECT LOSS OR THEREOF.



HITE Engineering Corp.
 Consulting Engineers
 2650 Meadowdale Blvd. Unit 2-3
 Mississauga, Ontario L5N 0M6
 T:905-812-3709 F:905-812-3710

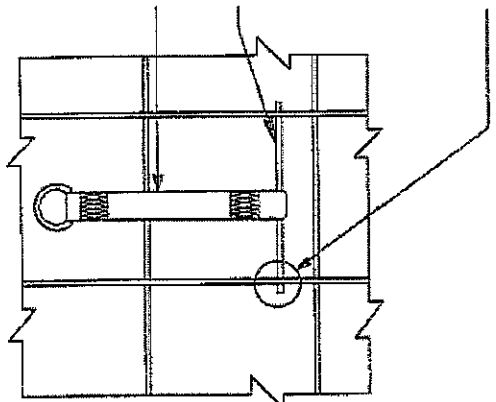
TYPICAL INSTALLATION OF SAFE-T-STRAP (HR-01) FOR REINFORCED CONCRETE WALLS

SAFE-T-STRAP
 333 FRANKOM STREET, A.J.A.X. ON.

DRAWN BY:	ENGR APPD:
D. SHIBBLEY	S. WAHABI
SCALE:	DATE:
N.T.S.	07/29/08
DRAWING NO:	SHEET #:
1298	1 of 4
	REV:
	0

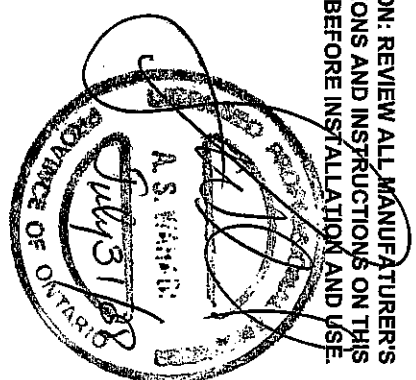
DOWEL TIED TO VERTICAL OR HORIZONTAL REBAR

REINFORCED CONC. WALL
 REBAR DOWEL
 MIN 15M x 300mm
 SAFE-T-STRAP (HR-01) ATTACHED TO REBAR
 3 1/2" MIN. CONC. COVER FOR REBAR DOWEL



REINFORCED CONCRETE WALL INSTALLATION [TYP]

CAUTION: REVIEW ALL MANUFACTURER'S INSTRUCTIONS AND INSTRUCTIONS ON THIS DRAWING BEFORE INSTALLATION AND USE.



INSTALLATION & SAFE USE NOTES:

- 1- INSPECT THE SAFE-T-STRAP FOR ANY SIGNS OF DEFECTS. DO NOT USE IF ANY DEFECTS ARE FOUND. QUARANTINE AND DISPOSE OF DEFECTIVE UNITS.
 - 2- ASSEMBLE THE SAFE-T-STRAP BY INSERTING THE REBAR DOWEL THROUGH THE SAFE-T-STRAP END LOOP (SEE DRAWING).
 - 3- SECURELY TIE THE REBAR DOWEL TO THE HORIZONTAL OR VERTICAL REBARS AS SHOWN IN THE DRAWING.
 - 4- ENSURE THE GREEN PROTECTIVE SLEEVE IS IN PLACE PROPERLY AND COVERS THE WEBBING WHERE IT CONTACTS THE EDGE OF WALL OR SLAB.
 - 5- INSPECT THE SAFE-T-STRAP INSTALLATION TO ENSURE ALL COMPONENTS ARE CORRECTLY SECURED IN PLACE PRIOR TO PLACING CONCRETE.
 - 6- ENSURE THE CONCRETE WALL HAS ATTAINED AT LEAST 7 DAYS STRENGTH FOR MIN. 20 MPa (3000 psi) BEFORE SAFE-T-STRAP IS USED.
 - 7- INSPECT THE SAFE-T-STRAP BEFORE EACH USE TO ENSURE ALL COMPONENTS ARE SECURED IN PLACE AND
 - 8- KEEP A WRITTEN LOG OF ALL INSPECTIONS.
- INSPECTION RECOMMENDATIONS:**
- 1- FOLLOW ALL MANUFACTURER'S INSPECTION GUIDELINES BEFORE EACH USE.
 - 2- INSPECT THE SAFE-T-STRAP BEFORE EACH USE FOR ANY SIGNS OF TAMPERING, SERIOUS CORROSION OR DISTRESS.
 - 3- INSPECT THE ENTIRE LENGTH OF NYLON WEBBING FOR ANY SIGNS OF EXCESSIVE WEAR, FRAYING, CUTS, OR DISTRESS.
 - 4- REMOVE THE SAFE-T-STRAP FROM SERVICE UPON DISCOVERY OF ANY DEFECT IN THE SYSTEM AND NOT USE UNTIL EXAMINED AND APPROVED FOR USE BY A PROFESSIONAL ENGINEER, AND
 - 5- KEEP A WRITTEN LOG OF ALL INSPECTIONS.

PROJECT NUMBER: 08-6027

GENERAL NOTES:

- 1-THE SAFE-T-STRAP IS DESIGNED WITH A ULTIMATE STRENGTH OF 5000LBS IN ACCORDANCE WITH THE REQUIREMENTS OF OSHA/CSA, REGULATIONS & APPLICABLE CSA AND ANSI STANDARDS.
 - 2-THE SYSTEM MUST BE USED IN ACCORDANCE WITH THE REQUIREMENTS OF OSHA/CSA.
 - 3-A COMPETENT WORKER MUST INSTALL AND INSPECT THE SYSTEM AND ALL OTHER FALL PROTECTION EQUIPMENT TO ENSURE THAT ALL ARE IN A SAFE OPERATIONAL CONDITION. THE WORKER MUST REPORT ANY SIGNS OF DISTRESS AND THE SYSTEM NOT USED UNTIL IT HAS BEEN REPAIRED AND APPROVED FOR USE BY A PROFESSIONAL ENGINEER.
 - 4-WHEN APPROACHING WITHIN 2M (6'5") OF AN UNPROTECTED EDGE, A WORKER SHALL BE WEARING A FULL BODY HARNESS EQUIPPED WITH A SHOCK ABSORBING LANYARD AND TIED TO AN ANCHOR OR A LIFELINE SECURED TO A SAFETY ANCHOR OUTSIDE THE 2M (6.5') LIMIT.
 - 5-THE FULL BODY HARNESSES AND LANYARDS MUST COMPLY WITH THE REQUIREMENTS OF OSHA/CSA.
 - 6-DEVELOP AN EMERGENCY RESCUE PLAN.
 - 7-HITE ENGINEERING CORPORATION MUST BE NOTIFIED OF ANY CHANGES TO OR DEVIATION FROM THIS DRAWING.
- OCCUPATIONAL CLASSIFICATIONS ALLOWED TO USE THIS SYSTEM:**
- ALL OCCUPATIONAL CLASSIFICATIONS WHERE FALL PROTECTION IS REQUIRED. THE SAFE-T-STRAP MUST NOT BE USED IN ENVIRONMENTS WHERE THE SYSTEM COULD COME IN CONTACT WITH CORROSIVE MATERIALS.

CONSTRUCTION

REV	DESCRIPTION	DATE	BY
0	FINAL	07-29-08	S.W./A.B.
1	REVISIONS	08-13-08	C.H.K.

THE INFORMATION CONTAINED HEREIN IS PROPRIETARY TO HITE ENGINEERING AND MAY NOT BE USED, REPRODUCED OR COPIED IN ANY MANNER WITHOUT THE WRITTEN PERMISSION OF HITE ENGINEERING. THE USER AND THE INFORMATION CONTAINED THEREFROM USES OR THEREIN.



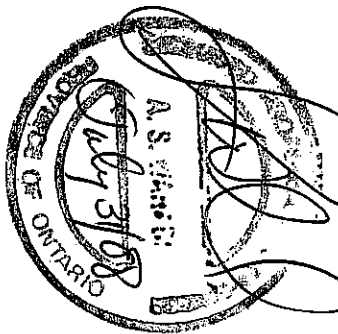
HITE Engineering Corp.
 Consulting Engineers
 2650 Macdowdville Blvd. Unit 2-3
 Mississauga, Ontario L5N 6W6
 T:905-812-3709 F:905-812-3710

TYPICAL INSTALLATION OF SAFE-T-STRAP (HR-01) FOR CAST-IN-PLACE REINFORCED CONC. WALLS

SAFE-T-STRAP
 333 FRANKOM STREET, A1A-X, ON.

DRAWN BY:	ENGR. APPD.
D. SHIRLEY	S. WATAHBI
SCALE:	DATE:
N.T.S.	07/29/08
DRAWING NO:	SHEET #:
1288	2 of 4
	REV:
	0

CAUTION: REVIEW ALL MANUFACTURER'S INSTRUCTIONS AND INSTRUCTIONS ON THIS DRAWING BEFORE INSTALLATION AND USE.



PROJECT NUMBER: 08-8027

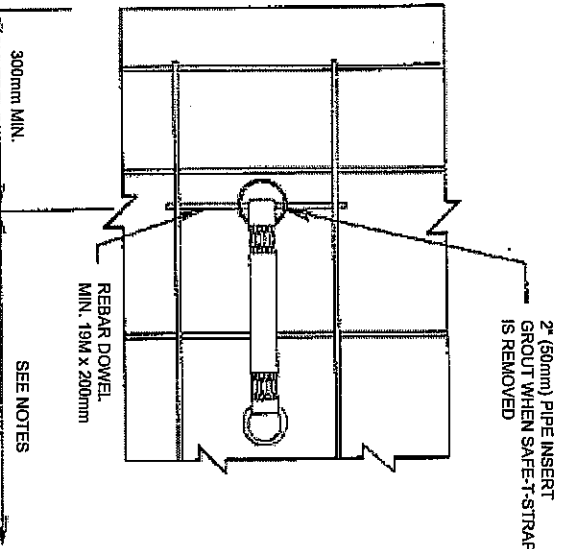
GENERAL NOTES:

- 1-THE SAFE-T-STRAP IS DESIGNED WITH AN ULTIMATE STRENGTH OF 8000 LBS IN ACCORDANCE WITH THE REQUIREMENTS OF OSHA/CSA, REGULATIONS & APPLICABLE CSA AND ANSI STANDARDS.
- 2-THE SYSTEM MUST BE USED IN ACCORDANCE WITH THE REQUIREMENTS OF OSHA/CSA.
- 3-A COMPETENT WORKER MUST INSTALL AND INSPECT THE SYSTEM AND ALL OTHER FALL PROTECTION EQUIPMENT TO ENSURE THAT ALL ARE IN A SAFE OPERATIONAL CONDITION. THE WORKER MUST REPORT ANY SIGNS OF DISTRESS AND THE SYSTEM NOT USED UNTIL IT HAS BEEN REPAIRED AND APPROVED FOR USE BY A PROFESSIONAL ENGINEER.
- 4-WHEN APPROACHING WITHIN 2M (6.5) OF AN UNPROTECTED EDGE, A WORKER SHALL BE WEARING A FULL BODY HARNESS EQUIPPED WITH A SHOCK ABSORBING LANYARD AND TIED TO AN ANCHOR OR A LINE/PIPE SECURED TO A SAFETY ANCHOR OUTSIDE THE 2M (6.5) LIMIT.
- 5-THE FULL BODY HARNESSES AND LANYARDS MUST COMPLY WITH THE REQUIREMENTS OF OSHA/CSA.
- 6-DEVELOP AN EMERGENCY RESCUE PLAN.
- 7-HITE ENGINEERING CORPORATION MUST BE NOTIFIED OF ANY CHANGES TO OR DEVIATION FROM THIS DRAWING.

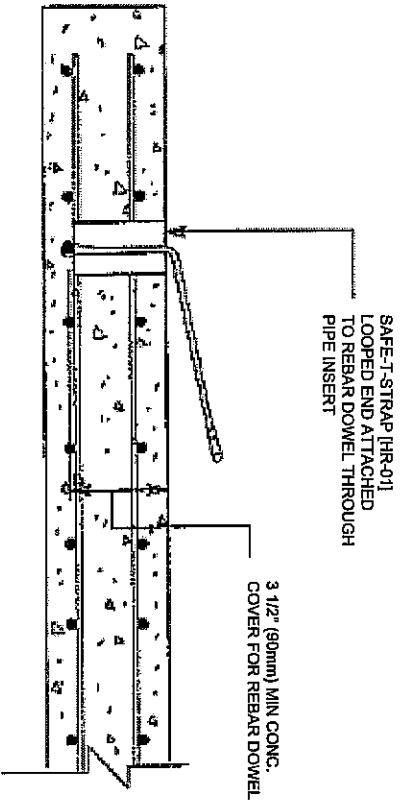
OCCUPATIONAL CLASSIFICATIONS ALLOWED TO USE THIS SYSTEM:
 ALL OCCUPATIONAL CLASSIFICATIONS WHERE FALL PROTECTION IS REQUIRED. THE SAFE-T-STRAP MUST NOT BE USED IN ENVIRONMENTS WHERE THE SYSTEM COULD COME IN CONTACT WITH CORROSIVE MATERIALS.

INSTALLATION & SAFE USE NOTES:

- 1-INSPECT THE UNWRAPPED SAFE-T-STRAP FOR ANY SIGNS OF DEFECTS. DO NOT USE IF ANY DEFECTS ARE FOUND, QUARANTINE AND DISPOSE OF DEFECTIVE UNITS.
 - 2-CUT PIPE INSERT TO CORRECT LENGTH AND BREAK ALL SHARP EDGES.
 - 3-ASSEMBLE THE SAFE-T-STRAP BY INSERTING THROUGH THE PIPE INSERT AND THEN INSERTING THE REBAR DOWEL THROUGH THE SAFE-T-STRAP END LOOP [SEE DRAWING].
 - 4-RECOMMENDED UNPROTECTED EDGE DISTANCE 4'-7" (1400mm) MIN. WHEN USED WITH A 4" (1200mm) APPROVED SHOCK ABSORBING LANYARD.
 - 5-SECURELY TIE THE REBAR DOWEL TO THE FLOOR SLAB LOWER REBARS.
 - 6-SECURELY TIE THE REBAR DOWEL TO THE FLOOR SLAB LOWER REBARS. MAIN 12" FROM FROM EDGE OF SLAB) BEFORE PLACING CONCRETE AS SHOWN IN THE DRAWING. SECURE PIPE INSERT TO REBAR AS WELL.
 - 7-INSPECT THE GREEN PROTECTIVE SLEEVE IS IN PLACE PROPERLY AND COVERS THE WEBSING WHERE IT CONTACTS THE EDGE OF THE PIPE INSERT.
 - 8-INSPECT THE SAFE-T-STRAP INSTALLATION TO ENSURE ALL COMPONENTS ARE CORRECTLY SECURED IN PLACE PRIOR TO PLACING CONCRETE.
 - 9-ENSURE THE CONCRETE WALL HAS ATTAINED AT LEAST 7 DAYS STRENGTH FOR MIN. 20 MPa (3000 psi) THE BEFORE SAFE-T-STRAP IS USED.
 - 10-INSPECT THE SAFE-T-STRAP BEFORE EACH USE TO ENSURE ALL COMPONENTS ARE SECURED IN PLACE AND 10- KEEP A WRITTEN LOG OF ALL INSPECTIONS.
- INSPECTION RECOMMENDATIONS:**
- 1-FOLLOW ALL MANUFACTURER'S INSPECTION GUIDELINES BEFORE EACH USE.
 - 2-INSPECT THE SAFE-T-STRAP BEFORE EACH USE FOR ANY SIGNS OF TAMPERING, SERIOUS CORROSION OR DISTRESS.
 - 3-INSPECT THE ENTIRE LENGTH OF NYLON WEBBING FOR ANY SIGNS OF EXCESSIVE WEAR, FRAILING, CUTS, OR DISTRESS.
 - 4-REMOVE THE SAFE-T-STRAP FROM SERVICE UPON DISCOVERY OF ANY DEFECT IN THE SYSTEM AND NOT USE UNTIL EXAMINED AND APPROVED FOR USE BY A PROFESSIONAL ENGINEER, AND 5- KEEP A WRITTEN LOG OF ALL INSPECTIONS.



PLAN VIEW



REINFORCED CONCRETE SLAB [TYP. SECTION]

CONSTRUCTION	FINAL
0	FINAL
REV1	DESCRIPTION

THE INFORMATION CONTAINED HEREIN IS PROPRIETARY TO HITE ENGINEERING AND MAY NOT BE USED, REPRODUCED OR DISCLOSED TO OTHERS EXCEPT AS SPECIFICALLY PERMITTED IN WRITING BY HITE ENGINEERING. ANY UNAUTHORIZED USE, REPRODUCTION, OR DISTRIBUTION OF THIS DOCUMENT IS STRICTLY PROHIBITED. THE SAME AND THE INFORMATION CONTAINED THEREIN FROM LOSS OR THEFT.

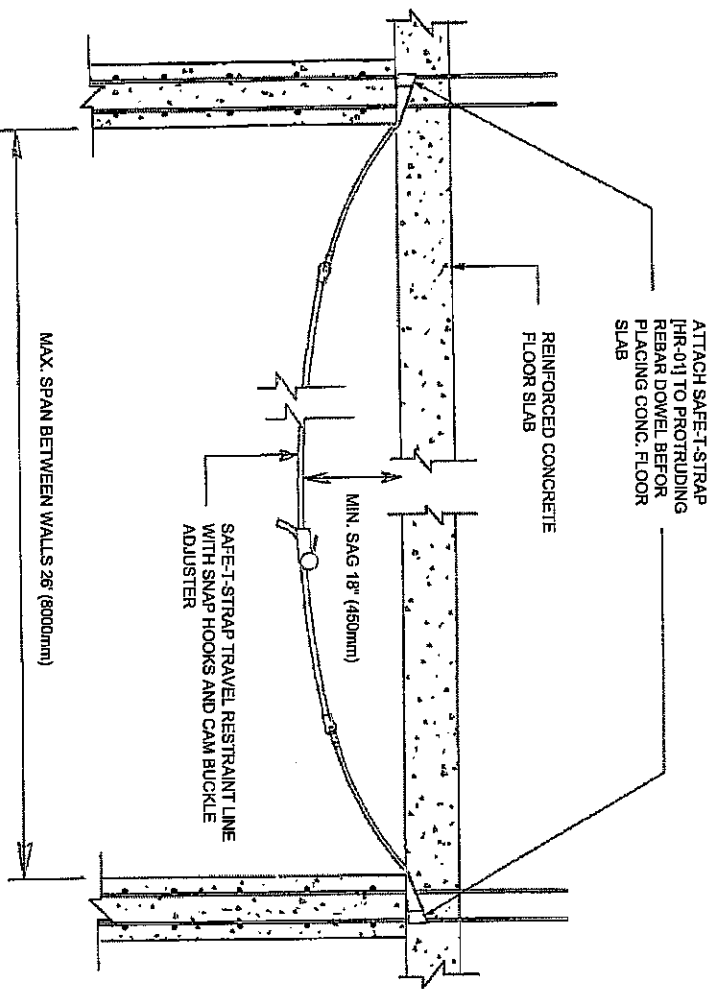
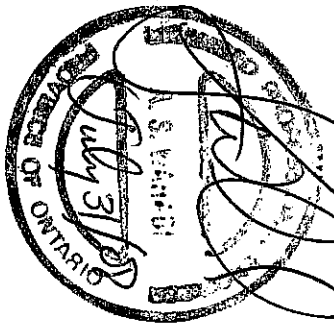


HITE Engineering Corp.
 Consulting Engineers
 2860 Meadowdale Blvd, Unit 2-3
 Mississauga, Ontario L5N 6M6
 T:905-812-3709 F:905-812-3710

TYPICAL INSTALLATION OF SAFE-T-STRAP [HR-Q1] FOR REINFORCED CONCRETE SLAB
 SAFE-T-STRAP
 333 FRANKOM STREET, A1A-X, ON.

DRAWN BY:	ENGR APPD:
D. SHIRLEY	S. WAHAB
SCALE:	DATE:
N.T.S.	07/29/08
DRAWING NO:	SHEET #:
1288	3 of 4
	REV:
	0

CAUTION: REVIEW ALL MANUFACTURER'S INSTRUCTIONS AND INSTRUCTIONS ON THIS DRAWING BEFORE INSTALLATION AND USE.



TYPICAL ASSEMBLY OF SAFE-T-STRAP SL-SERIES TRAVEL RESTRAINT SYSTEM

SL-SERIES INSTALLATION AND SAFE USE NOTES:

- 1- ENSURE THAT THE CONCRETE WALL HAS ATTAINED AT LEAST 7 DAYS STRENGTH FOR MIN. 20 MPa (3000 PSI) BEFORE ASSEMBLING THE TRAVEL RESTRAINT SYSTEM TO THE SAFE-T-STRAPS.
 - 2- INSPECT THE SAFE-T-STRAP SL-SERIES TRAVEL RESTRAINT SYSTEM FOR ANY SIGNS OF DEFECTS. DO NOT USE IF ANY DEFECTS ARE FOUND, QUARANTINE AND DISPOSE OF DEFECTIVE UNITS.
 - 3- SECURELY ATTACH THE TRAVEL RESTRAINT SYSTEM SELF-LOCKING SNAP HOOKS AT EACH END TO THE SAFE-T-STRAPS AS SHOWN IN THE DRAWING.
 - 4- ADJUST TENSION IN THE TRAVEL RESTRAINT SYSTEM SO THAT THE SAG IN THE LINE IS NOT LESS THAN 18" (450mm).
 - 5- INSPECT THE SAFE-T-STRAPS AND THE TRAVEL RESTRAINT SYSTEM TO ENSURE ALL COMPONENTS ARE SECURED IN PLACE.
 - 6- TOTAL LENGTH OF SHOCK ABSORBING LANYARD + SAG IN THE TRAVEL RESTRAINT SYSTEM MUST BE SUCH THAT THE WORKER WILL BE ABLE TO TRAVEL TO A MAXIMUM OF 2' FROM THE UNPROTECTED EDGE.
 - 7- THE TRAVEL RESTRAINT SYSTEM IS RATED FOR MAX. 2 WORKERS AT ANY ONE TIME.
- INSPECTION RECOMMENDATIONS:**
- 1- FOLLOW ALL MANUFACTURER'S INSPECTION GUIDELINES BEFORE EACH USE.
 - 2- INSPECT THE SAFE-T-STRAPS FOR ANY SIGNS OF TAMPERING, SERIOUS CORROSION OR DISTRESS.
 - 3- INSPECT THE SELF-LOCKING SNAP HOOKS AND THE CAM BUCKLE OF THE TRAVEL RESTRAINT SYSTEM FOR ANY SIGNS OF TAMPERING, SERIOUS CORROSION OR DISTRESS.
 - 4- INSPECT THE ENTIRE LENGTH OF NYLON WEBBING FOR ANY SIGNS OF EXCESSIVE WEAR, FRAILING, CUTS, OR DISTRESS.
 - 5- REMOVE THE TRAVEL RESTRAINT SYSTEM OR SAFE-T-STRAPS FROM SERVICE UPON DISCOVERY OF ANY DEFECT IN THE SYSTEM AND NOT USE UNTIL EXAMINED AND APPROVED FOR USE BY A PROFESSIONAL ENGINEER.
 - 6- KEEP A WRITTEN LOG OF ALL INSPECTIONS.

PROJECT NUMBER: 08-6027

GENERAL NOTES:

- 1- THE SAFE-T-STRAP TRAVEL RESTRAINT SYSTEM IS DESIGNED IN ACCORDANCE WITH THE REQUIREMENTS OF OSHA/CSA REGULATIONS & APPLICABLE CSA AND ANSI STANDARDS.
- 2- THE SYSTEM MUST BE USED IN ACCORDANCE WITH THE REQUIREMENTS OF OSHA/CSA.
- 3- A COMPETENT WORKER MUST INSTALL AND INSPECT THE SYSTEM AND ALL OTHER FALL PROTECTION EQUIPMENT TO ENSURE THAT ALL ARE IN A SAFE OPERATIONAL CONDITION. THE WORKER MUST REPORT ANY SIGNS OF DISTRESS AND THE SYSTEM NOT USED UNTIL IT HAS BEEN REPAIRED AND APPROVED FOR USE BY A PROFESSIONAL ENGINEER.
- 4- WHEN APPROACHING WITHIN 2M (6.5') OF AN UNPROTECTED EDGE, A WORKER SHALL BE WEARING A FULL BODY HARNESS EQUIPPED WITH A SHOCK ABSORBING LANYARD AND TIED TO AN ANCHOR OR A LIFELINE SECURED TO A SAFETY ANCHOR OUTSIDE THE 2M (6.5') LIMIT.
- 5- THE FULL BODY HARNESSES AND LANYARDS MUST COMPLY WITH THE REQUIREMENTS OF OSHA/CSA.
- 6- DEVELOP AN EMERGENCY RESCUE PLAN.
- 7- HITE ENGINEERING CORPORATION MUST BE NOTIFIED OF ANY CHANGES TO OR DEVIATION FROM THIS DRAWING.

OCCUPATIONAL CLASSIFICATIONS ALLOWED TO USE THIS SYSTEM:

ALL OCCUPATIONAL CLASSIFICATIONS WHERE FALL PROTECTION IS REQUIRED. THE SAFE-T-STRAP MUST NOT BE USED IN ENVIRONMENTS WHERE THE SYSTEM COULD COME IN CONTACT WITH CORROSIVE MATERIALS.

TYPICAL INSTALLATION OF SAFE-T-STRAP SL-SERIES TRAVEL RESTRAINT SYSTEMS

SAFE-T-STRAP
333 FRANKOM STREET, A.L.A.X. ON.

HITE Engineering Corp.
Consulting Engineers

2680 Meadowdale Blvd, Unit 2-3
Mississauga, Ontario L5N 6M6
T: 905-812-3708 F: 905-812-3710



THE INFORMATION CONTAINED HEREIN IS PROPRIETARY TO HITE ENGINEERING AND MAY NOT BE USED, REPRODUCED OR DISCLOSED TO OTHERS EXCEPT AS SPECIFICALLY PERMITTED IN WRITING BY HITE ENGINEERING. ANY REPRODUCTION OR USE, AGREED TO PROTECT THE SAME AND THE INFORMATION CONTAINED THEREIN FROM LOSS OR THEFT.

CONSTRUCTION	FINAL	DATE	BY	CHK	APP
	X	07-28-08	S.W.	S.M.	
REV	DESCRIPTION	DATE	BY	CHK	APP
0	FINAL	07-28-08	S.W.	S.M.	
	REVISIONS				

DRAWN BY:	D.SHIRLEY	ENGR APP'D:	S.W./A.V.B.I.
SCALE:	N.T.S.	DATE:	07/29/08
DRAWING NO:	1266	SHEET #:	4 of 4
		REV:	0